

TRANSFORMATIONAL LITERACY LEADERSHIP

A course designed to improve district literacy results



Leadership is changing rapidly, with school leaders focusing on how to help every member of the learning community feel valued, educated, and safe. To be an effective leader, you must be able to inspire, welcome everyone's voice, bridge cooperative efforts for the overall good, and develop agency within each member.

Schoolwide's newest **Transformational Literacy Leadership** course is designed to support school and district leaders in their efforts to work collaboratively with staff and community to achieve a high level of literacy for all students.

The course is presented as a series of **4 Modules**. Each Module includes 3 virtual sessions (90 mins in length) that can be scheduled at your convenience.

Modules may be purchased individually OR as a complete series, and every purchase includes access to all recorded sessions for 60 days, as well as a 1-year subscription to Fundamentals Unlimited (Schoolwide's digital curriculum and teaching resource platform) and a copy of the professional book *What You Need to Know About Leading Effective Literacy Practices*.

COURSE MODULES

MODULE 1

BUILDING SCHEMA: DEVELOPING READERS AND WRITERS

Session 1 (90 mins): Creating a Culturally Relevant and Literacy-Rich Learning Environment

Session 2 (90 mins): Two Reciprocal Processes: Reading and Writing

Session 3 (90 mins): Best Practices in Literacy Instruction



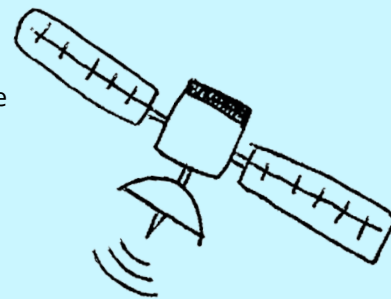
MODULE 2

ENGAGING ALL STAKEHOLDERS IN A LEARNING AND GROWTH PROCESS

Session 4 (90 mins): Self-Reflecting and Creating a Supportive Learning Culture

Session 5 (90 mins): Establishing Structures to Promote Collaboration and Develop Agency

Session 6 (90 mins): Creating a Literacy Engagement Plan That Reflects the Community's Culture and Diversity



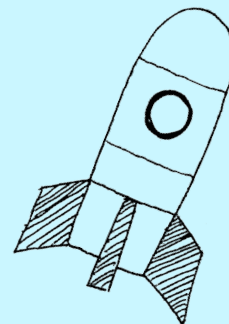
MODULE 3

GATHERING AND ANALYZING EVIDENCE OF TEACHING AND LEARNING

Session 7 (90 mins): Data-Driven Decision-Making: Collecting and Analyzing Multiple Sources of Data

Session 8 (90 mins): Classroom Walkthroughs/Learning Walks and Literacy Look-fors

Session 9 (90 mins): Teacher Observations and the Importance of Timely and Meaningful Feedback



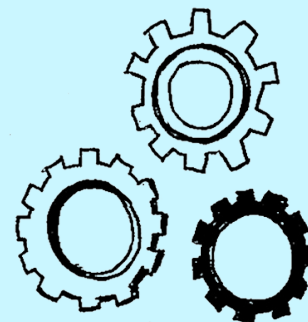
MODULE 4

DRIVING CONTINUOUS IMPROVEMENT

Session 10 (90 mins): Essential Elements for Positive and Lasting Change

Session 11 (90 mins): Creating a Literacy Action Plan That Begins With a Shared Vision

Session 12 (90 mins): Planning Responsive and Collaborative Professional Learning Experiences



For more information and to speak with a Literacy Leadership Specialist, please contact us.

Telephone: 1.800.261.9964

Email: customersuccess@schoolwide.com

Courses may also be customized to include Onsite PD and/or Administrator Coaching. Onsite support is available as individual half- or full days, and/or multi-day institutes.